

セルロイドハウス

横浜館

Celluloid Library
Memoir House

YOKOHAMA



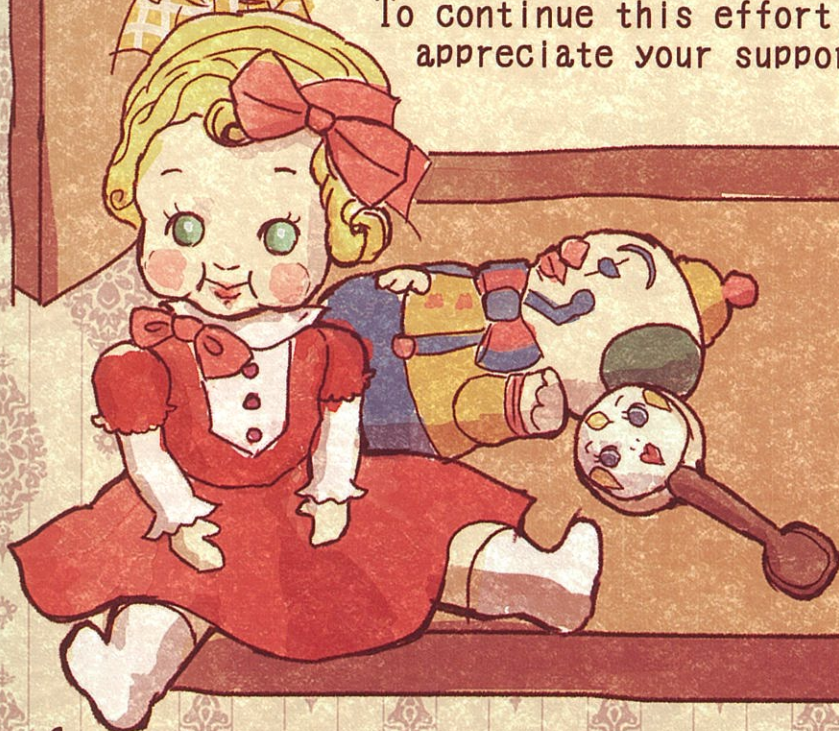


What activities is Celluloid Library Memoir House doing?

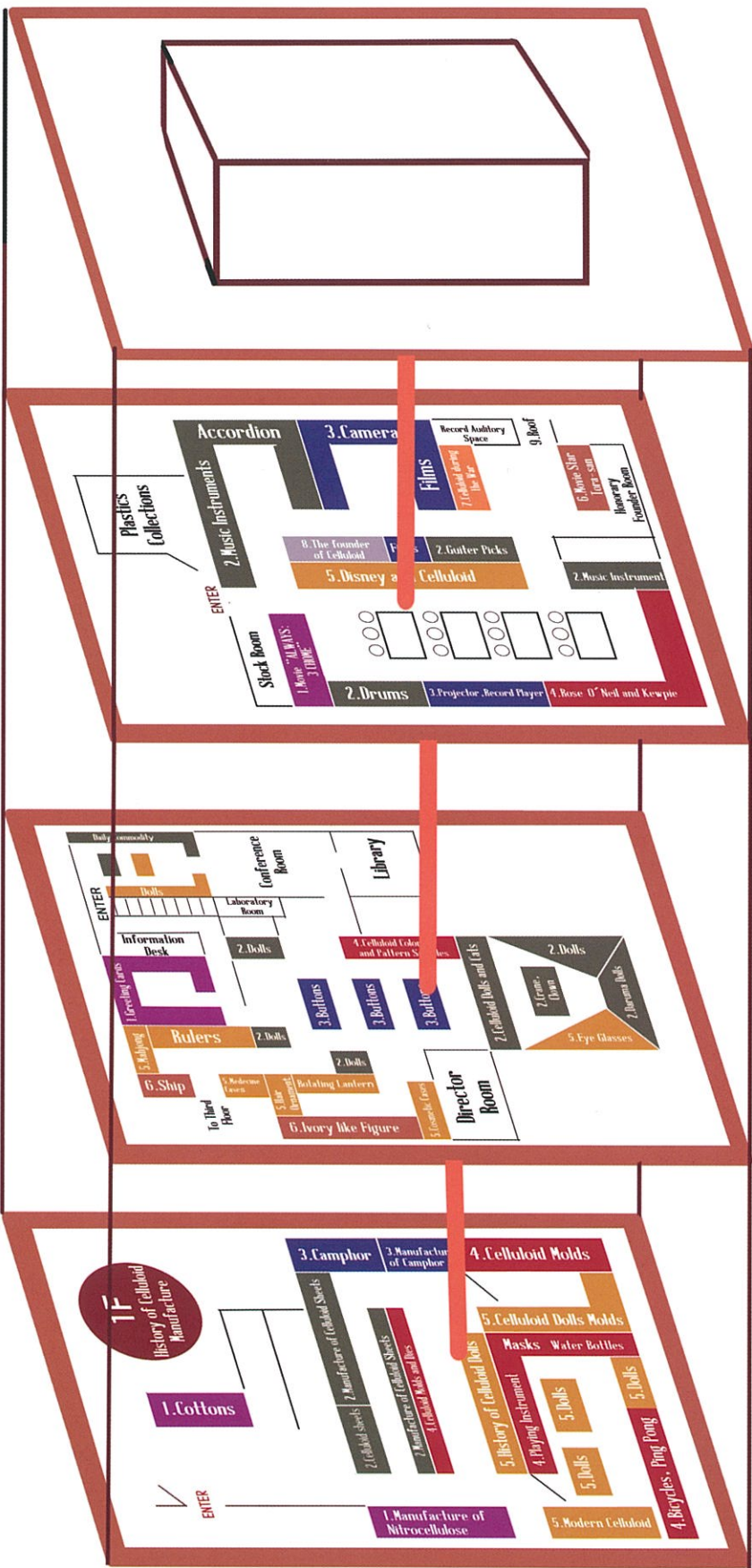
The House conducts research work on celluloids. We collect and exhibit Documents, Products, Dies and other items that are related to Celluloids for the purpose of studying the celluloid industrial culture.

The house lends (temporary or long term) valuable celluloid products if the purpose is for research.

To continue this effort we would appreciate your support.



M A P



Roof
Storage

3F
Display of
Celluloid

2F
Display of
Celluloid

1F
History of Celluloid
Manufacture

1F History of Celluloid Manufacture

1. Cottons

ENTER

1. Manufacture of Nitrocellulose

2. Celluloid sheets 2. Manufacture of Celluloid Sheets

3. Camphor

2. Manufacture of Celluloid Sheets
4. Celluloid Molds and Dies

3. Manufacture of Camphor

5. History of Celluloid Dolls

4. Celluloid Molds

4. Playing Instrument

5. Celluloid Dolls Molds

5. Modern Celluloid

5. Dolls

5. Dolls

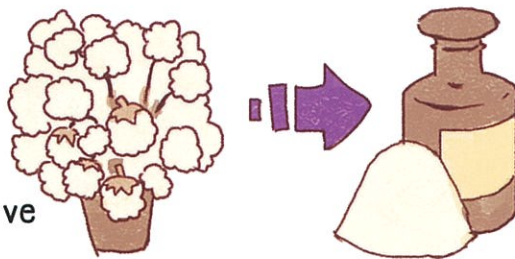
Masks
Water Bottles

4. Bicycles, Ping Pong

5. Dolls

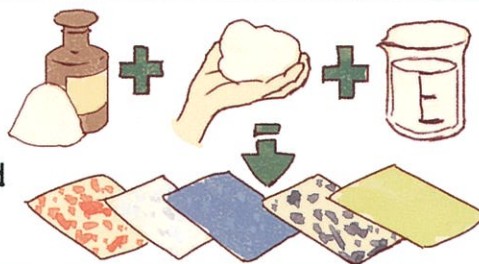
1. Soluble Nitrocellulose

This section is an area where the process of manufacturing soluble nitrocellulose is introduced. Nitrocellulose is one of the materials of sheet celluloid. You can observe linter and measuring instrument.



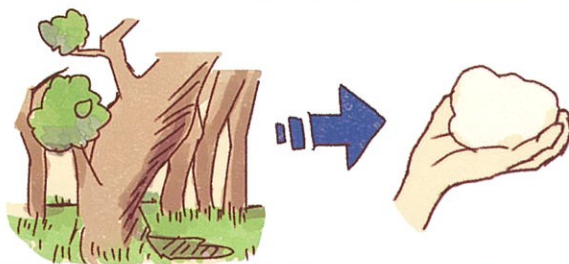
2. Sheet Celluloid

This area introduces sheet celluloids made from soluble nitrocellulose, camphor, and solvent. The picture of Dai Nippon Celluloid Corporation (one of Japanese celluloid manufacturers) is also shown.



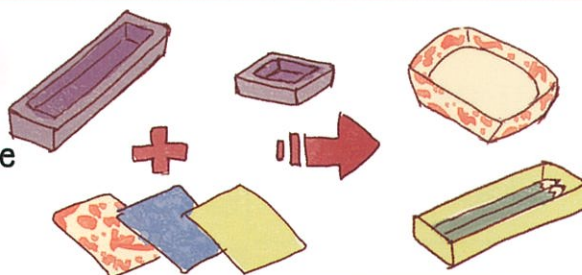
3. Camphor

This area introduces camphor which is one of the materials for producing sheet celluloid and illustrates its production process.



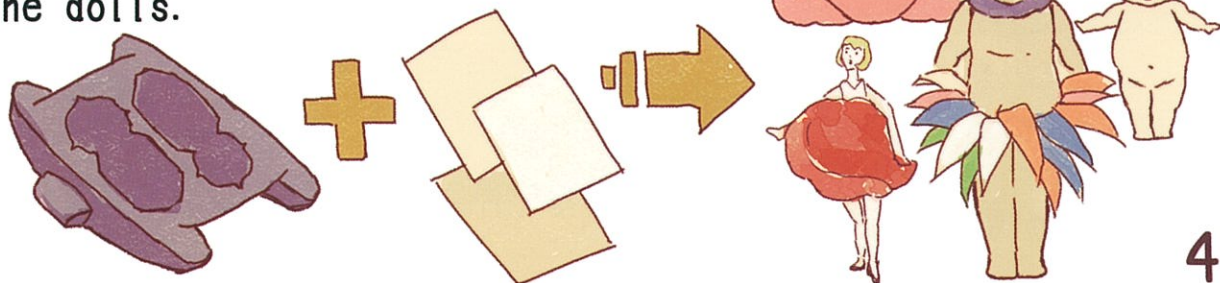
4. House Hold Products and School Supplies

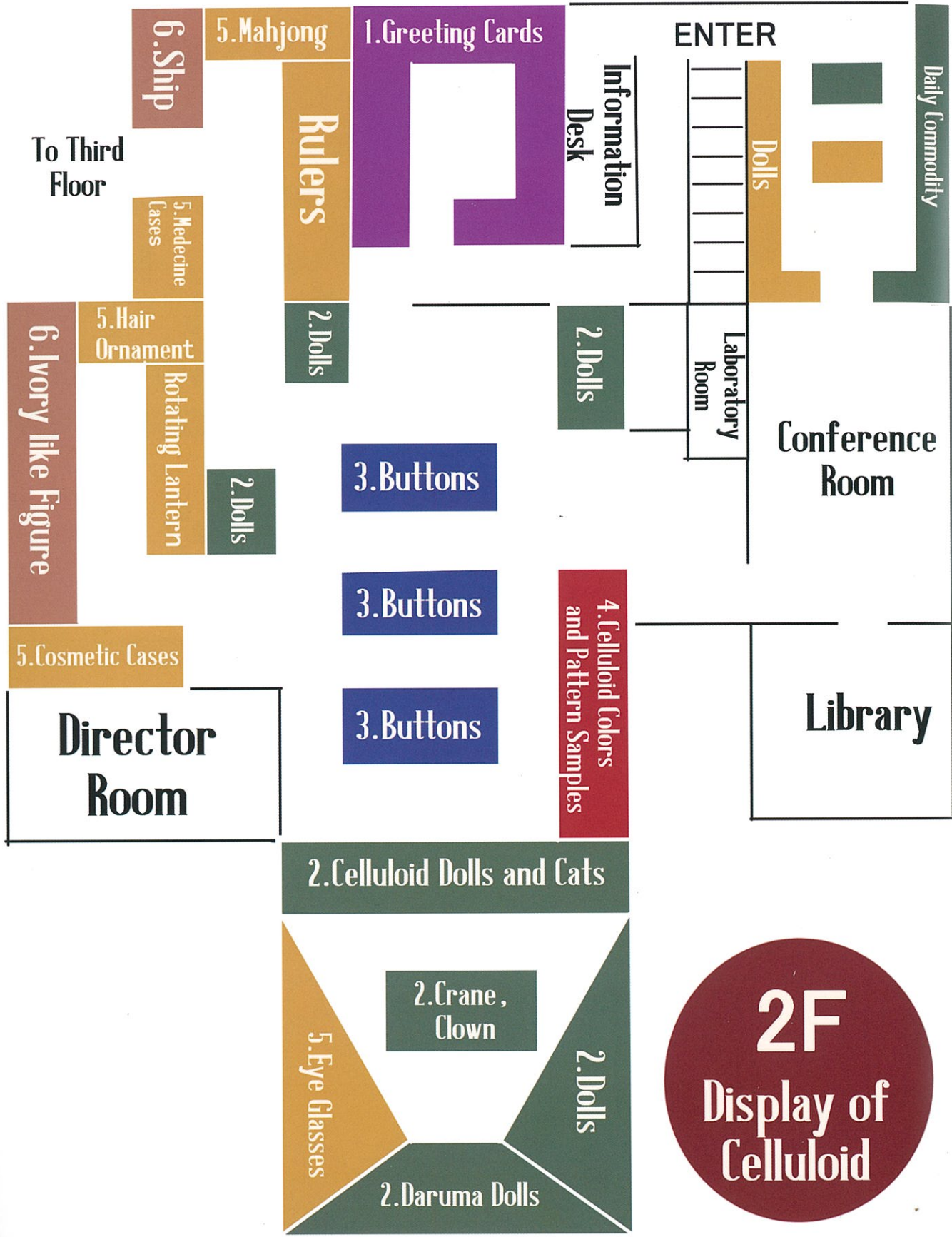
This area introduces celluloid for house hold products, school supplies, toys, and the Dies used to manufacturer these products.



5. Celluloid Dolls

This area introduces celluloid dolls such as Kewpie and Parpoo including the history and the manufacturing of the dolls.

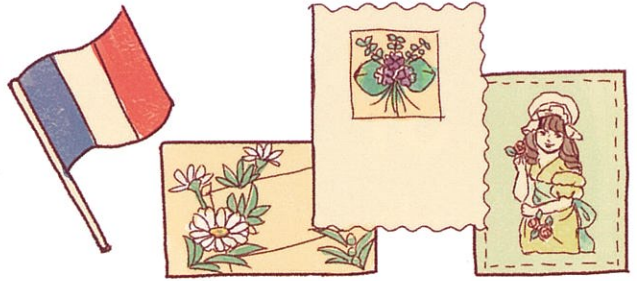




2F
 Display of Celluloid

1. Greeting Cards

About 700 greeting cards made in France in 1900's are exhibited.



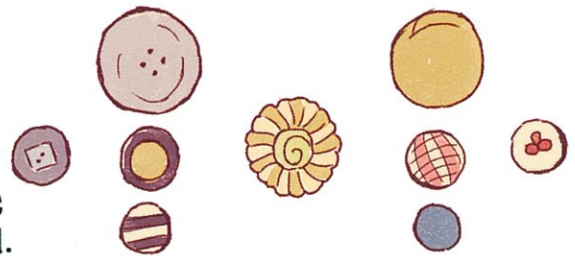
2. Celluloid Dolls

Various celluloid dolls are displayed inside the glass case.



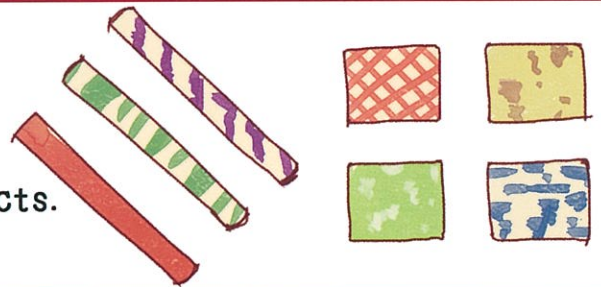
3. Buttons

Celluloid buttons were popular as a replacement for ivory buttons. The differences between the plastic and celluloid buttons are explained.



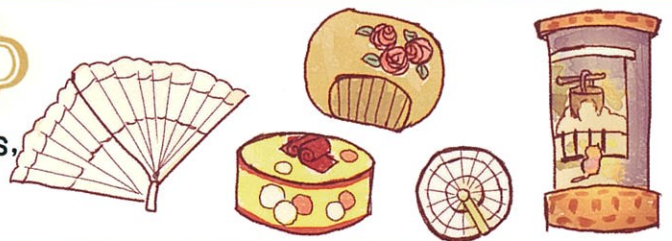
4. Celluloid Colors and Pattern Samples

This area displays the colors and patterns of various celluloid products.



5. Daily Commodity

Cosmetic cases, hair accessories, and turning lanterns produced from celluloids are displayed.



6. Ivory Immitation Statues

Various ivory like celluloids are displayed.



3F
Display of Celluloid

Plastics Collections

ENTER

Stock Room

2. Music Instruments

1. Movie "ALWAYS: 3 CHOME"

2. Drums

5. Disney and Celluloid

3. Projector, Record Player

8. The founder of Celluloid

Films

2. Guitar Picks

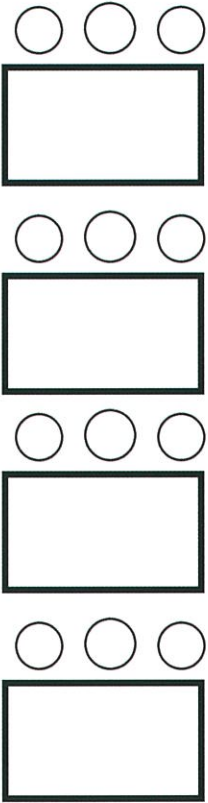
Accordion

3. Camera

7. Celluloid during the War

Record Auditory Space

4. Rose O'Neil and Kewpie



2. Music Instrument

Honorary Founder Room

6. Movie Star Tora-san

9. Roof

1. Movie "ALWAYS: 3 CHOME NO YUHI (ALWAYS: Sunset on 3-Chome Street)

The House lent some of our collection such as baby rattles, to movie "ALWAYS: Sunset on 3-Chome Street". Photographs of stars Hiroko Yakushimaru and Maki Horikita when they were using our collection in the movie are displayed.



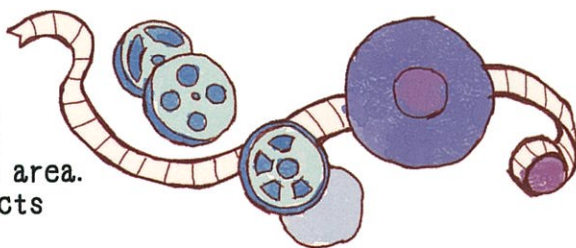
2. Music Instruments and Celluloid

Celluloid is used in many kinds of music instruments. Some of the actual music instruments, such as drums, accordions and many others are displayed in this area.



3. Record Player and Film

Actual rolls of camera films which were invented by Kodak, movie films which were invented by Mr. Edison, and record players invented after films are displayed in this area. Also manufacturing process of these products is displayed.



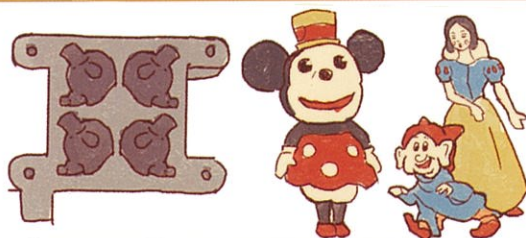
4. Rose O'Neill and Kewpie

This area introduces relations between Kewpie's creator Rose O'Neill and Germany.



5. Disney and Celluloid

Many Mickeys and Minnies are chatting!
(Cooperated by Hiral Toys Corporation)



6. Kiyoshi Atsumi and Celluloid

Kiyoshi Atsumi who acted "Tora-san" in the movie, was working as a delivery staff at the Tokyo Factory of celluloid manufacturer.



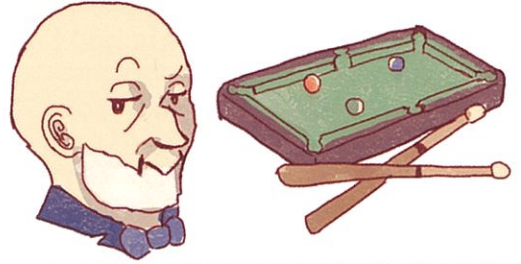
7. Celluloid during the war

Gas masks, figures of soldiers, battleships, stationary, and many goods from war period are displayed in this area.



8. The founder of Celluloid

The founder of celluloid, Mr. Hyatt, made billiard ball from celluloid. At those times, billiard balls were usually made from ivory.



9. The Roof

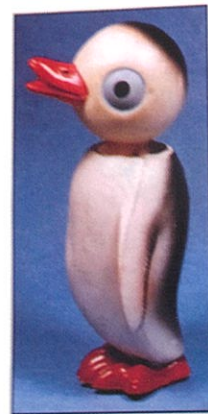
Displays in this area are:

- Goods from early stage of plastics (dolls, toys, stuffed toys, toddler car)
- Celluloid sheet, stick and ball
- Machinery and tools

Figure of Crane (in Japanese :Tsuru), made at Sekiguchi Factory. Mold was made by Kamijo Mold Company.



Figure of Penguin, made at Kobayashi Daihachi Celluloid Factory and at one time had been exported to United States.



A wonderfully unusual 4 1/4" tall nodding penguin, blow molded in white celluloid with black, pink, and blue highlights, circle in diamond trademark, Daihachi Kobayashi, Tokyo, Japan. \$55.00 - \$75.00.

Times until Celluloid was invented

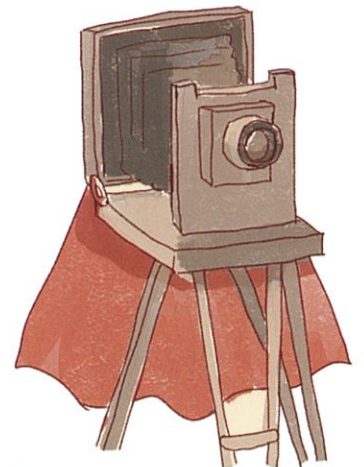


The Founder's Pot
(displayed at
1st floor. Page 3)

“At the beginning of the company this Pot was used to manufacture nitrocellulose. Our company started with the effort to transform a handful of absorbent cotton into nitro cotton in this pot. Our predecessors bear the smell of strong acid, running with sweat as they were working with this pot, so we mustn't forget their struggles with this newly developed product. To recognize this hardship and touch the soul of our founders, this Pot must not be forgotten and should be kept forever as company treasure.”

This was stated and inscribed by the president of TAIHEI CHEMICALS LIMITED.

At one time there was photography called Collodion process invented by an English man named Scott Archer. This was at the time popular in Japan. This process used Collodion solution. The solution is applied to glass board and set into the camera. When the shutter is clicked the image remains in the glass board. The Collodion solution is a soluble Nitrocellulose with 11.5 to 12.2% of nitrification. Celluloid also utilizes this solution except that the soluble Nitrocellulose has 10.8 to 11.2% of nitrification.



Dry plate cameras
(displayed at 3rd
floor. Page 8)

CELLULOID LIBRARY MEMOIR HOUSE INTRODUCTION

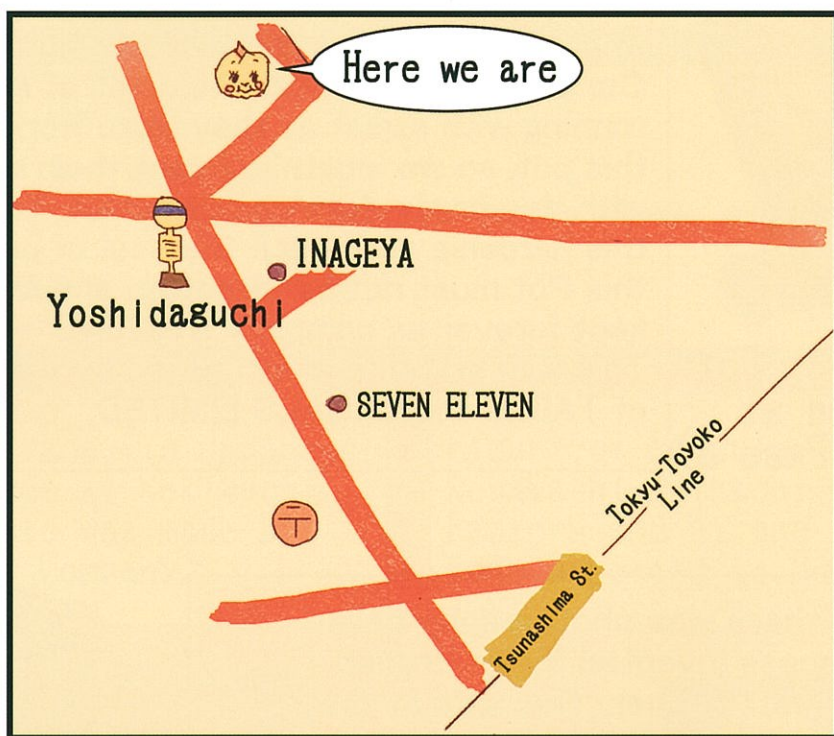
Address

*Takada-Higashi 1-1-20, Kouhoku-ku,
Yokohama-shi, Kanagawa*

Tel: 045-549-6260

<http://www.celluloidhouse.com/>

Open on Every Saturday from 10AM to 16PM



From Tsunashima Station (Tokyu Toyoko-line)

→by foot: 15 minutes

→by bus: ride the bus which goes to "Eda" (line 3),
get off at "Yoshidaguchi", and 3 minutes walk
ride the bus which goes to "Shinjyo" (line 4),
get off at "Yoshidaguchi", and 3 minutes walk

Published in September 23th, 2015
Edited and Illustrated by Cookie Lemon